



User
Manual
BØRRESEN
LOUDSPEAKER

BØRRESEN

Z1

BØRRESEN

Z2

BØRRESEN

Z3

BØRRESEN

Z5

Content

Warranty information	2
Welcome, a word from the developer	3
Assembling the Z1 stand	4
Positioning the loudspeakers in your home.....	6
Connecting the loudspeakers to your system.....	7
Choice of speaker wire.....	8
Running in the new loudspeakers	8
Maintenance.....	9
The BØRRESEN Z-series loudspeakers.....	10

Important

Check the serial number. You can find the serial number on the label placed above the connector box on the back of the loudspeakers. Also check that this serial number matches the one on your invoice.

Please contact your dealer if there is no serial number on your invoice, if the serial number on the invoice is wrong, or if there is no serial number on the loudspeakers.



BØRRESEN Acoustics provides an extended 5-year warranty against production defects on all BØRRESEN products according to our policy:

<http://www.borresen-acoustics.com/warranty>

Welcome

Congratulations on your new BØRRESEN loudspeakers. Rest assured that these BØRRESEN loudspeakers will provide you with a most outstanding musical experience and will let you truly enjoy the music that you love, just as intimate and close as it was originally performed by the artists themselves.

To achieve the best performance, carefully read this user manual prior to setting up your new loudspeakers.

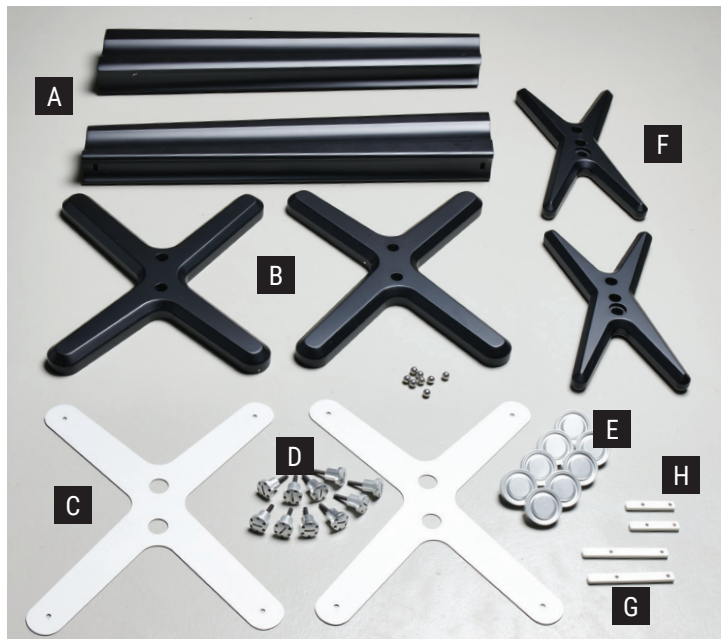
More information is available on www.borresen-acoustics.com



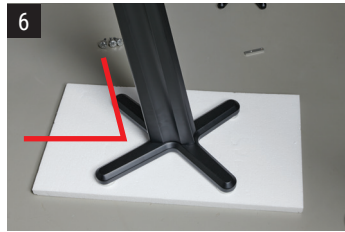
Michael Borresen,
CVO and Co-founder of BØRRESEN Acoustics

A handwritten signature in black ink, which appears to read 'Michael Borresen'. The signature is stylized and fluid, with a long horizontal stroke extending to the right.

Assembling the Z1 stand



1. Start assembling the bottom cross **B** by aligning the steel part **F** with the holes in the composite part.
2. Fix the two parts together by mounting the feet **E** . Make the feet lock in the holes, and tighten firmly.
3. Fit the long iron part **G** into the slot on the rear side of the stand **A** . Slide the longer of the two threaded aluminum parts into the slot of the column.
4. Place the cross with the longest sides to the back and position the 2 bolts **D** .
5. Tighten them securely using a coin.
6. Place the stand on the floor and check that the long sides of the bottom cross point in the tilt direction.
7. Slide the shortest threaded aluminum part **H** into the slot on the rear of the stand.
8. Position the small cross **F** on the top of the stand.
9. Use two bolts **D** to attach the cross securely to the stand.
10. Tighten the bolts securely using a coin.
11. Insert a steel ball into each of the four countersinks.
12. Carefully place the Z1 monitor speaker, making certain the countersinks in the bottom of the loudspeaker fit and connect to the four balls (this takes precession and patience).
13. Check very carefully that the loudspeaker is placed correctly in the intended position.
14. Now you are ready to mount the loudspeaker securely to the stand using one bolt **D** . Find the threaded hole below the top cross **F** and mount the bolt.
Use a coin to tighten the bolt tight and securely.



Positioning

The sound from loudspeakers depends very much on the room and on the way they are set up. Please consult your dealer for advice on how to set up your BØRRESEN loudspeakers in your home.

These are general guidelines that will give you a good starting point for further experimenting to determine the ideal setup for your room.

A The distance from the side walls to the speakers **N** :

The BØRRESEN loudspeakers are not particularly sensitive to side walls, so about 15 cm will be enough. Positioning the loudspeakers too closely to the side walls, however, is likely to increase bass.

B The distance between the rear of the loudspeakers and the wall behind them:

Begin with a distance of 50 cm. This distance should be exactly the same for both loudspeakers. Test the loudspeakers out with music you know to determine the distance that provides the best sound for you.

Greater distance = less bass, more precise bass, better precision, and bigger sound stage.

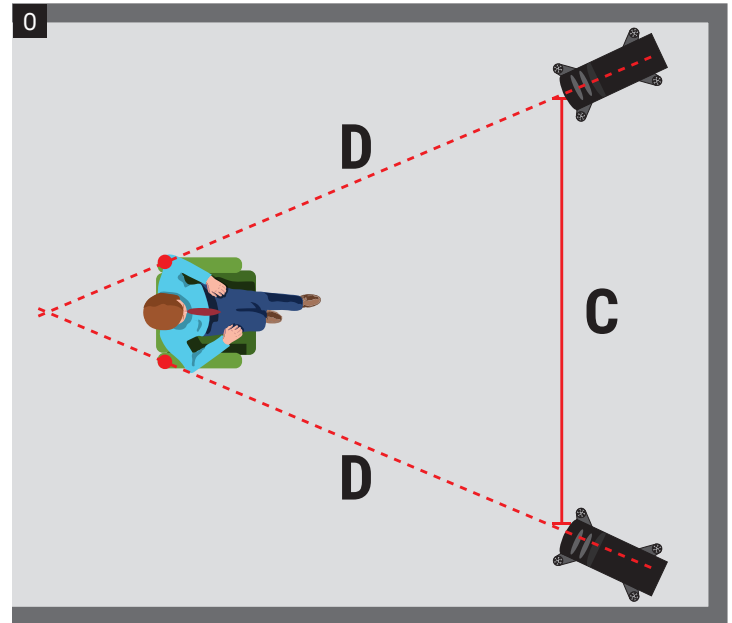
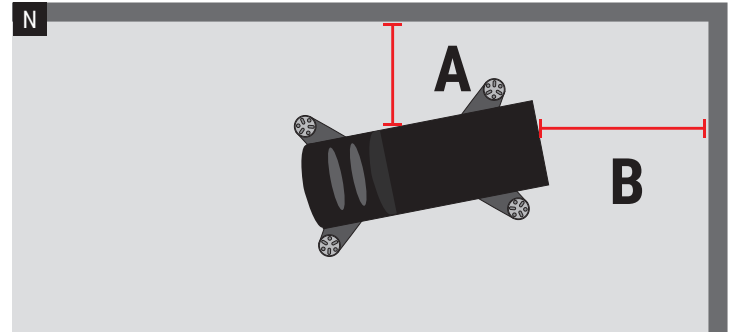
Shorter distance = more and softer bass, smaller sound stage.

C The distance between the loudspeakers:

The ideal distance between the loudspeakers should not be less than 3 meters.

D The distance between the loudspeakers and the listener **O** :

Place the loudspeakers at an angle so that the imaginary lines between the listener and the loudspeakers point towards the listener's shoulders. The lines should cross about one meter behind the listener's head. The loudspeakers are correctly angled when the listener is just able to see the two inner sides of the loudspeakers.





Connecting the loudspeakers

1. Connect a two-pole (+/-) loudspeaker cable to the binding posts, that are located at the rear of the loudspeaker **P**.

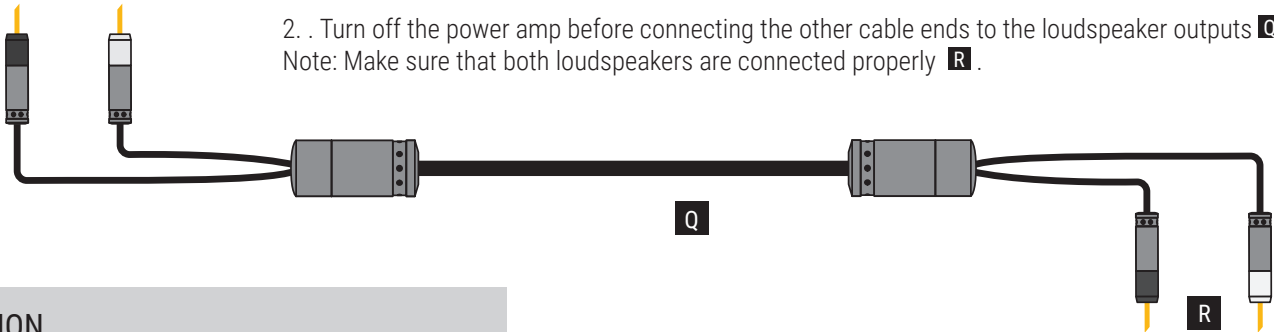
The high quality binding posts can accommodate only 4-mm-plugs ("banana plugs").

The pins can be put directly into the binding posts without any tightening necessary.

Special Notes:

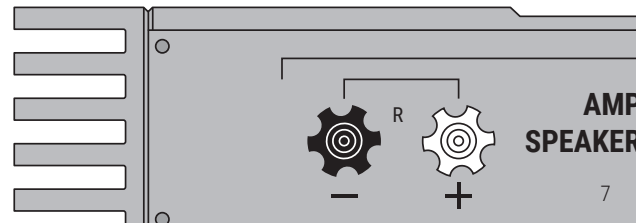
- As with every connection system, ensure that the contact is tight and has a proper contact area.
- Connectors with gold plating will typically offer the best results and remain corrosion-free.
- Ensure that the positive and negative cables do not make contact with each other.
- Check the connectors occasionally to make sure that nothing has loosened.

2. . Turn off the power amp before connecting the other cable ends to the loudspeaker outputs **Q** .
Note: Make sure that both loudspeakers are connected properly **R** .



CAUTION

Distorted output signals from too weak, defective, or overloaded amplifiers may damage the loudspeakers. Use high quality amplifiers only and operate loudspeakers and amplifiers within specified power ratings.



Choice of loudspeaker cables

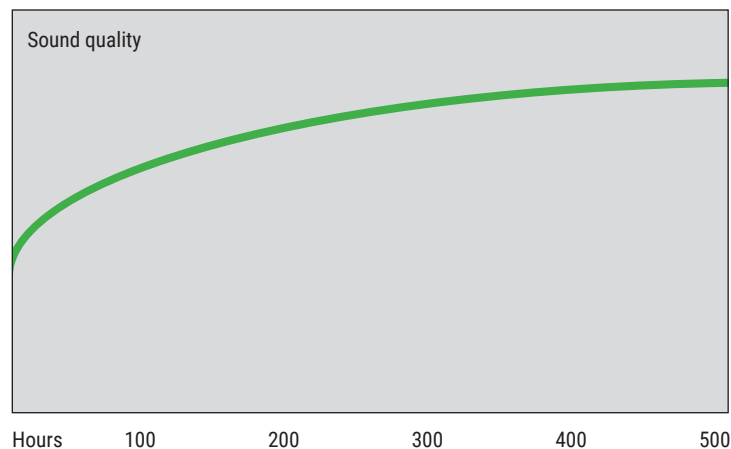
The impact that high quality speaker wires have on sound quality can be dramatic. However, the BØRRESEN loudspeakers are designed to be neutral and not specifically restricted to any particular type of cables - any high quality speaker wires will sound great.

BØRRESEN loudspeakers have been developed with a great deal of high-standard technical know-how and experience gained from years of developing Ansuz cables and accessories. So, sharing an almost identical DNA, you may experience a positive synergy by connecting Ansuz speaker wires to your BØRRESEN loudspeakers.

Please consult your BØRRESEN dealer for further information about compatible loudspeaker cables that will suit both your music system and the BØRRESEN loudspeakers.

Running in the new loudspeakers

All new, high quality loudspeakers need a certain period of running-in time. As BØRRESEN loudspeakers use long-stroke bass drivers with natural rubber surrounds, the loudspeakers need at least 50 - 100 hours of actual music playing, at a decent sound level. You will notice the gradual improvement in sound quality. No particular precautions need to be taken during those hours.



However, you should implement these important standard practices:

- Let the loudspeakers reach room temperature before plugging them in.
Condensation may arise in the electronic circuitry when moving the loudspeakers from cold to warm surroundings. Such moisture may damage the loudspeakers' components.
- Never use the product in damp settings.
- Never insert foreign bodies into the bass reflex ports of the loudspeakers.
- Avoid touching the loudspeakers' elements.

Maintenance

- Clean the surface of the loudspeakers with a firmly wrung, damp cloths.
- Do not use any detergent. It may discolor the finish.
- Do not use a vacuum cleaner to remove dust from the loudspeakers' elements.
Brush it away gently with a soft brush.
- Do not expose the cabinets to direct sunlight.

The BØRRESEN Z-series loudspeakers



BØRRESEN Z1



BØRRESEN Z2



BØRRESEN Z3



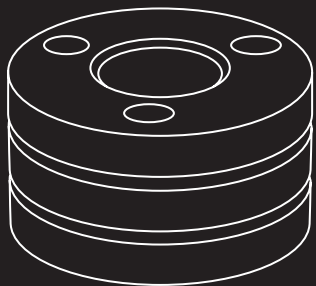
BØRRESEN Z5

Adding more and better resonance control

Darkz is a series of efficient devices to ground all components in a high-end audio system. They are mechanically tuned to allow vibrations a path out of the component and to keep various components individually isolated. Darkz provide a distinct sound improvement over standard-mounted component feet.

BØRRESEN loudspeakers are designed for an easy upgrade by adding Ansuz Darkz to the loudspeakers' feet. The sonic improvement caused by Darkz is undeniable and can almost be addictive.

Darkz are available in 4 quality levels; D·TC, D2, C and A. Darkz can be easily installed under any of the BØRRESEN loudspeakers.



Ask your dealer for a demonstration.



BØRRESEN



<http://www.borresen-acoustics.com>