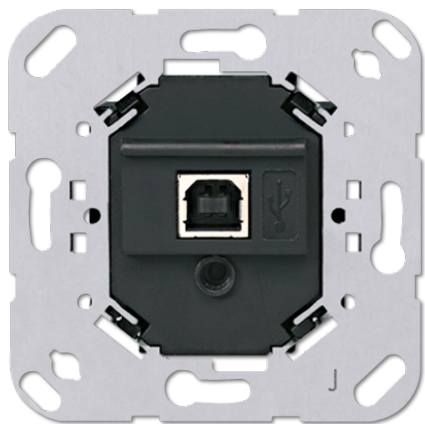


# Product data sheet

## USB data interface



### Reference number

2131 USBS

### KNX USB data interface

#### Intended use

- Connecting PCs to KNX systems
- Addressing, programming and diagnostics of KNX devices
- KNX Data Secure compatible with ETS 5.7.3 or higher
- Support of long frames for ETS5
- Installation in flush box according to EN 60670-1

#### Product characteristics

- Connection with device connection terminal
- Electrical isolation of KNX and USB
- Temporary operation in unmounted condition permissible
- The firmware in the USB data interface can be updated via the ETS product database
- Power supply exclusively via the USB port

#### Centre plates:

AS / A ranges: ref.-no. A 569 PLT ..

CD range: ref.-no. CD 569 T ..

SL range: ref.-no. SL 569 T ..

LS range: ref.-no. .. 969 T .., .. 2969 T ..

#### Technical data

KNX medium:	TP 256
Power supply:	via USB port of the PC
Connection	
Connection, KNX:	terminal
USB port:	USB socket, type B
Transfer rate:	9600 Baud
Transmission protocol:	compatible with USB 1.1/2.0
Length of USB cable:	max. 5 m
Ambient temperature:	-5 ... +45 °C
Storing temperature:	-25 ... +70 °C
Protection class:	II

